

PROFILE : Mark of The 80's

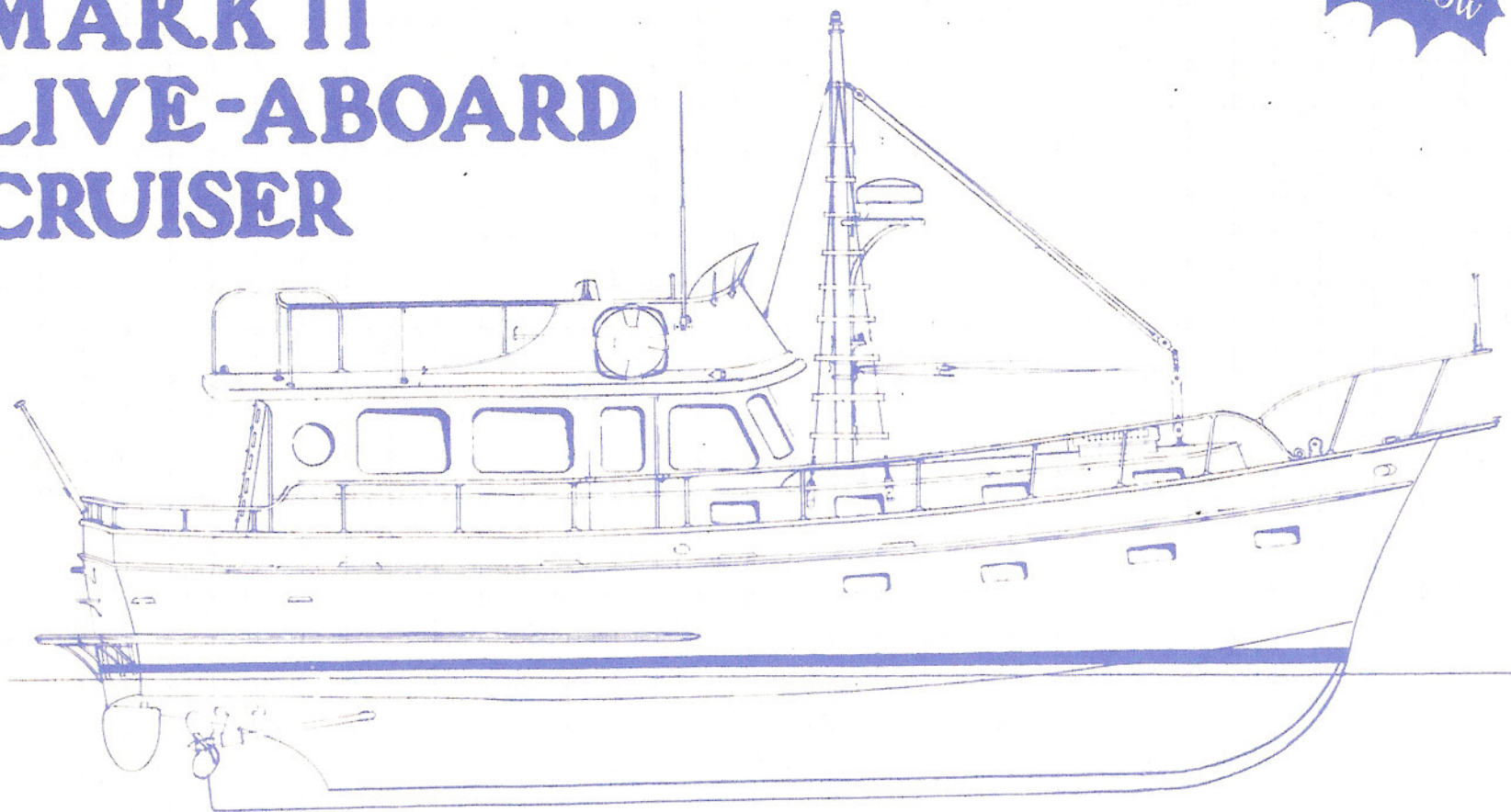
MARINE TRADER 44

MARK II

LIVE-ABOARD

CRUISER

POWER BOAT QUEEN
1980 NEW YORK
NATIONAL BOAT SHOW



The first new Trawler Yacht profile in 20 years



Home of Marine Trader Trawlers & Island Trader Sailing Yachts
MARINE TRADING INTERNATIONAL
FOOT OF WEST LAKE AVE., BAY HEAD, NEW JERSEY 08742 (201) 899-6800

NEW DESIGN - SEAWORTHINESS PLUS LIVE ABOARD COMFORT

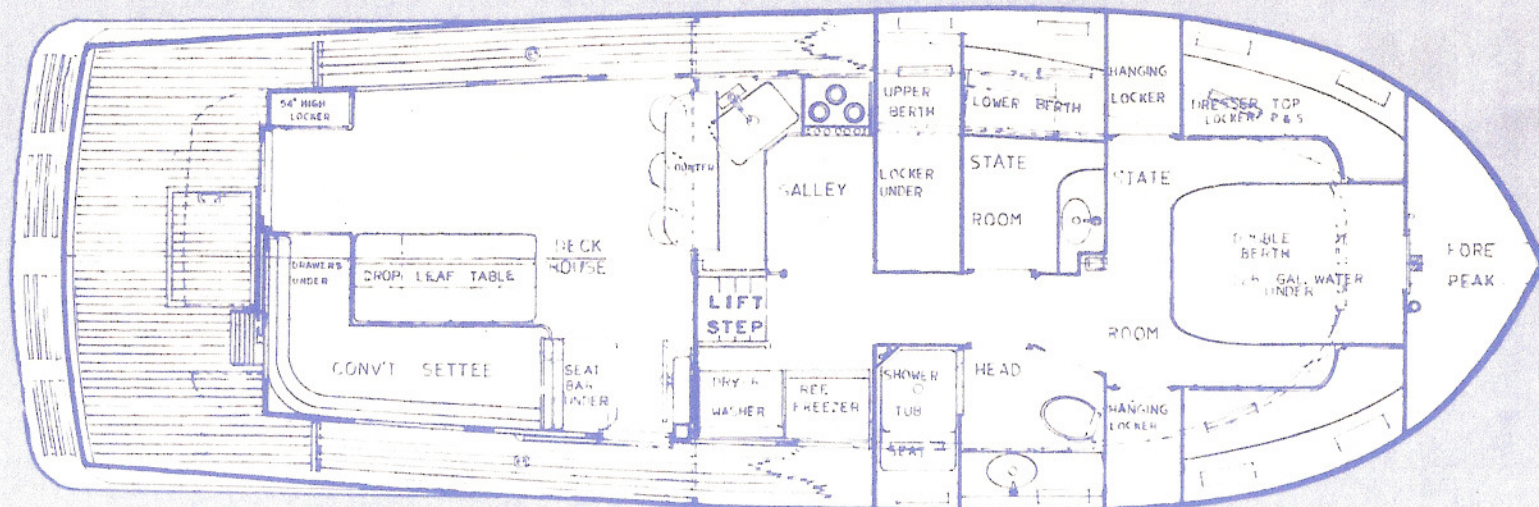


SPECIFICATIONS

L.O.A. 44'0"
 BEAM 14'4"
 DRAFT 4'4"
 POWER SINGLE OR TWIN 120 HP LEHMAN-FORD DIESEL ENG.

PRICE \$94,500.00
 SINGLE DIESEL

MARINE TRADER 44 MARK II LIVE-ABOARD CRUISER



NEW DESIGN CONCEPT IN TRAWLER YACHT CRUISERS

The new Marine Trader Mark II Live-Aboard Cruiser design represents a major departure from the traditional stubby look of the trawler. The new profile shows an extended trunk cabin forward and a 17 foot long main deck house running aft from midships to an open lounge area at the stern. By tradition the trawler deck house has always started forward of midships. This new extended trunk cabin concept, combined with the well-proven 44' Marine Trader hull, makes the Mark II an extremely seaworthy, comfortable live-aboard cruiser.

The deck plan shown here brings together the best features of both the Marine Trader Sedan and Double Cabin layouts. The result is a large, light and airy 90-square foot private salon located in the sedan super-structure and a spacious 266-square foot living quarters section under the forward trunk cabin.

Incorporating good design, low maintenance, economical operation, the Marine Trader 44 Mark II may be your soundest financial investment. She is a true live-aboard cruising trawler yacht that can be easily crewed by two people. As with all Marine Traders, the Mark II comes complete with a wide range of standard equipment.

More MARINE TRADERS are sold than any other trawler in the world!

STANDARD EQUIPMENT INCLUDED IN BASE BOAT PRICE

- Propane Range with Oven
- Dual Voltage Electric Refrigerator-Freezer
- Strip-laid Teak Decks
- Teak Cap Rail and Trim
- Teak Parquet Floors
- Hand-Rubbed Teak Interior
- Upholstered Foam Cushions and Mattresses
- Cabin Curtains
- Stainless Steel Galley Sink
- Teak Drop Leaf Hi-Lo Table
- Heads with Showers
- Molded Fiberglass Flybridge with Bench Seats
- Safety Glass Throughout
- Brass Opening Ports
- Forward Access Hatch
- Stainless Steel Stanchions and Rails
- Stainless Steel Bow Rail and Pulpit
- Windshield Wiper
- Anchor and Road
- Bow Mounted Anchor Roller-Chock
- Lighted Compass
- Navigation Lights
- Electric Horn
- Cabin Screens
- Fire Extinguishers
- Fully Instrumented Flybridge
- Zincs As Required
- Mild Steel Fuel Tanks (2)
- Propeller, 3-Blade Bronze
- Stainless Steel Shaft
- Water Cooled Mufflers
- Dual Steering Stations
- Fully Instrumented Inside Helm Stations
- Positive Shut Offs on Through Hull Fittings
- Pressure Water System
- Electric Hot Water Heater with Heat Exchanger off Engines
- Dock Side Wiring and Shore Power Cord
- 110 Volt Wiring Throughout
- All Wiring Circuit Breakers or Fuse Protected
- Combination Electric Bilge Shower Pump
- Copper Bonding Throughout
- Cutlass Rubber Bearing
- Two Heavy Duty Batteries (12-v)
- Battery Selector Switch
- Pressure Water System
- Stainless Steel Water Tanks (2)
- Life Jackets and Ships Bell
- Life Ring/Throwing Device
- Mast and Boom
- Teak Steering Wheel
- Teak Swim Platform
- Transom Door or Gate and Steps
- Teak Hand Rails
- Roll-Out Bar (Most Models)
- Bath Tub (Most Models)
- Mirrored Vanity Basin in Heads
- Buzzer Alarm on Engine, Oil and Cooling Systems
- 55 Amp Alternator
- Fuel Filters
- Teak Ratlines
- Tinted Flybridge Wind Screen
- Thru-Deck Bow Sampson Post
- Heavy Soundproofing around Engine Compartment
- Holding Tank Sanitation System

Equipment as required by model and subject to change without notice.

1/10/80